

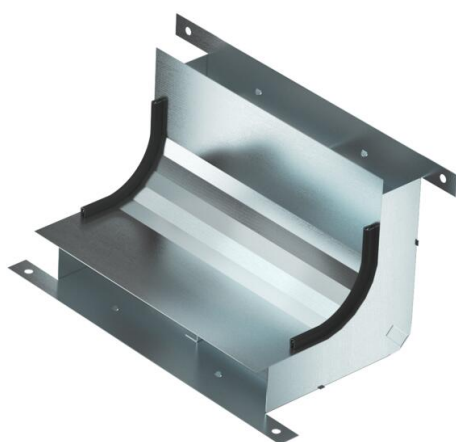
# Technical data sheet

Vertical bend, two-compartment, height 48 mm

Item number: 7400641



Vertical bend, two-compartment, for vertical direction changes of screed-covered underfloor ducts (wall connections, supplies).



**St** Steel

**FS** Strip galvanized

## Master data

Item number	7400641
Description 1	Vertical bend
Description 2	2 compartments for EÜK-2
Manufacturer	OBO
Dimension	330x177,7x177,7
Material	Steel
Surface	Strip galvanized
Surface standard	DIN EN 10346
Smallest sales unit	1
Unit of quantity	Piece
Weight	101.54 kg
Weight unit	kg/100 pc.

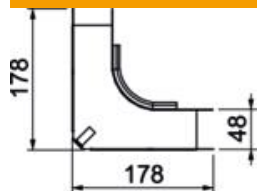
# Technical data sheet

Vertical bend, two-compartment, height 48 mm

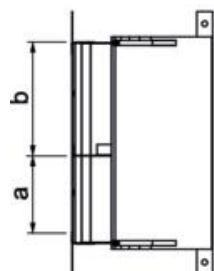
Item number: 7400641



## Dimensions



Length	178 mm
Width	250 mm
Height	48 mm
Dimension a	110 mm
Dimension b	140 mm
Dimension h	48 mm



## Technical data

Number of fixed partitions	1
Number of compartments	2 St.
Suitable for screed-flush closed underfloor ducts	no
Suitable for screed-covered underfloor ducts	yes
Trunking width, min.	250 mm
Duct height, min.	48 mm
Cross-section, draw a	4784 mm <sup>2</sup>
Cross-section, draw b	6176 mm <sup>2</sup>